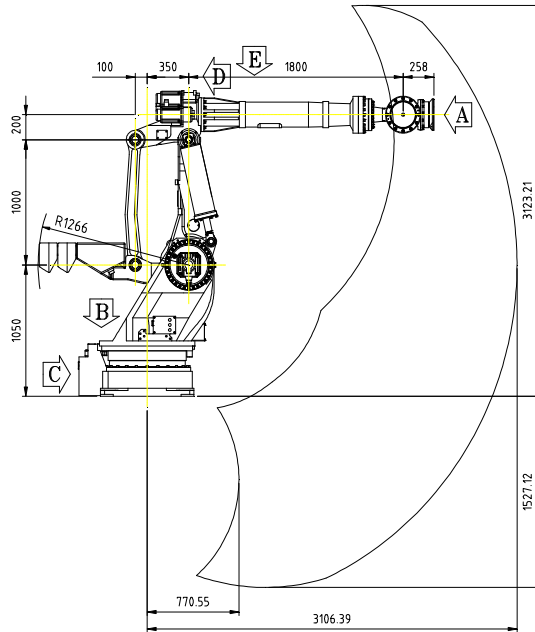
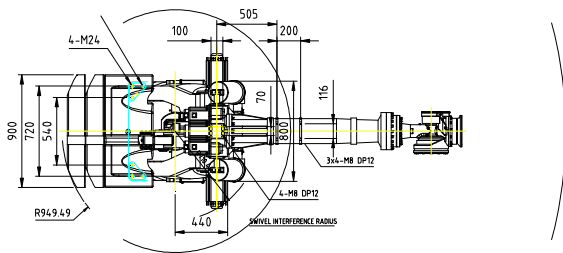


HX400S

Payload 400Kgf

Installation	
Floor	●
Ceiling	
Wall	

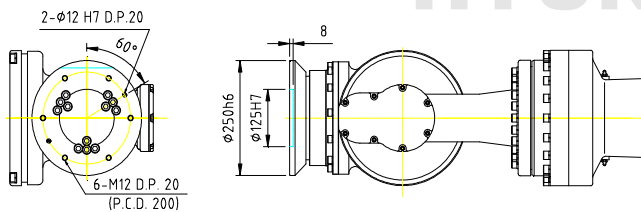
Application	
Spot Welding	●
Arc Welding	
Handling	●



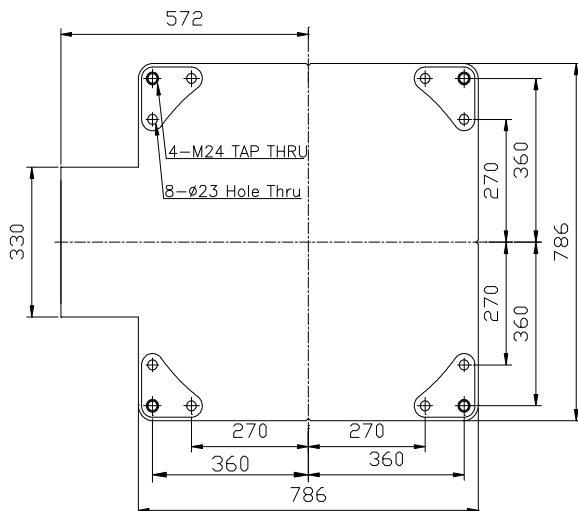
VIEW A Wrist Flange Spec.

Items	Specification	
Model	HX400S	
Payload	400Kg	
Structure	Articulated	
Degree of Freedom	6 Axes	
Drive System	AC SERVO MOTOR	
S T R O K E	S	$\pm 3.142 \text{ rad } (\pm 180^\circ)$
	H	$+1.658^\circ - 0.827\text{rad} (+95^\circ - 50^\circ)$
	V	$+2.094^\circ - 0.436\text{rad} (+120^\circ - 25^\circ)$
W	R2	$\pm 6.283 \text{ rad } (\pm 360^\circ)$
	B	$\pm 2.094 \text{ rad } (\pm 120^\circ)$
	R1	$\pm 6.283 \text{ rad } (\pm 360^\circ)$
S P E E D	S	1.484 rad / s (85° / s)
	H	1.484 rad / s (85° / s)
	V	1.484 rad / s (85° / s)
	R2	1.745 rad / s (100° / s)
	B	1.745 rad / s (100° / s)
	R1	2.793 rad / s (160° / s)
Wrist torque	R2	1960 N·m (200Kgf·m)
	B	1960 N·m (200Kgf·m)
	R1	823 N·m (84Kgf·m)
Repeatability	$\pm 0.5 \text{ mm}$	
Ambient Temp.	0 ~ 40. C (273 ~ 313 K)	
Body Weight	2910 Kg	
Working Envelop	5.89 m ³	

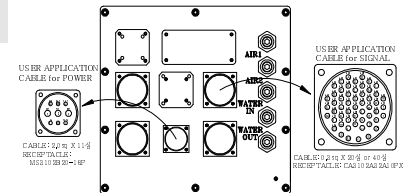
VIEW C Application Cable (Option)



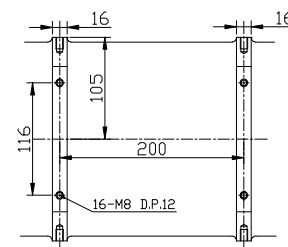
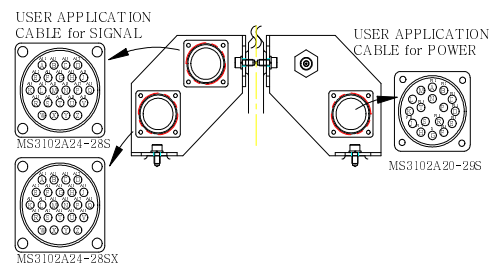
VIEW B Body Installation Spec.



VIEW D Application Cable (Option)



VIEW E Bolt Spec. for App. Cable



** Data and dimensions may change without notice. 2009.09.20