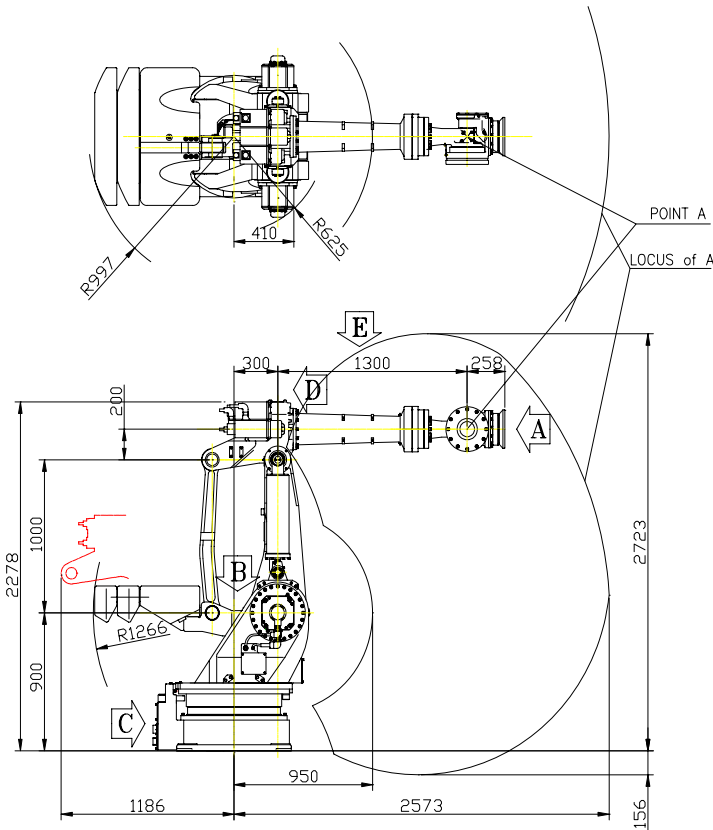


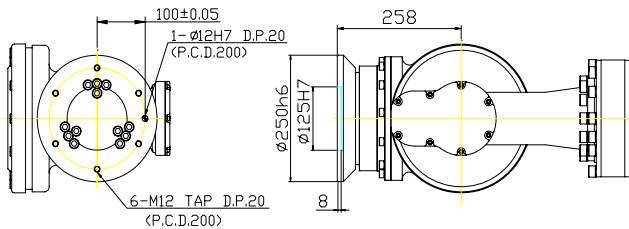
HX500

Payload 500 Kg

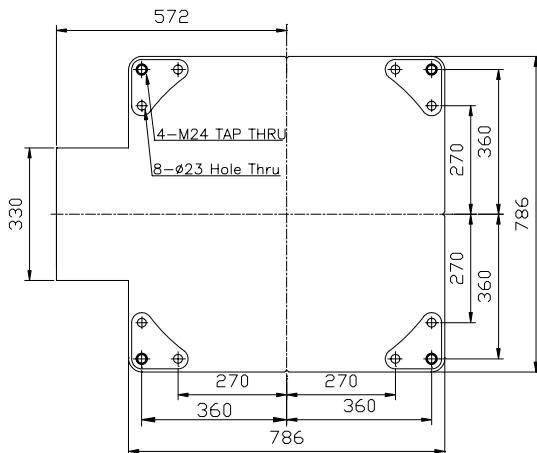
INSTALLATION		APPLICATION	
FLOOR	●	SPOT	●
CEILING		ARC	
WALL		HANDLING	●
		ASSEMBLY	●
		SEALING	
		PAINTING	



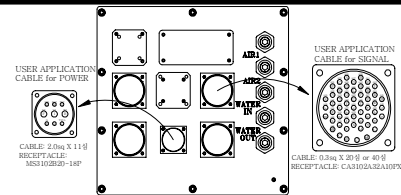
VIEW "A" For Tool Attachment



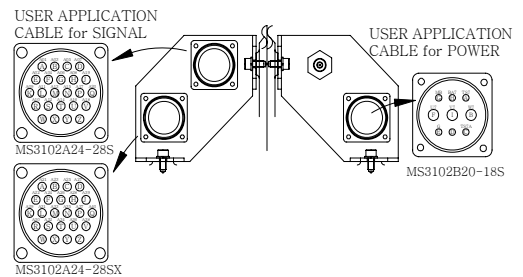
VIEW "B" For Installation



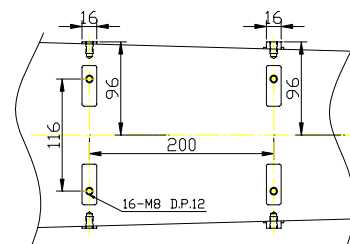
VIEW "C" For User Application



VIEW "D" For User Application



VIEW E Attachment for Application



Item	Specification
Model	HX500
Payload	500Kg
Structure	Articulated
Degree of Freedom	6-Axis
Driving Method	AC Servo Motor
Max. Motion Range	S Swivel $\pm 3.142 \text{ rad } (\pm 180^\circ)$
	H For/Backward $+1.31 \sim -1.31 \text{ rad } (+75^\circ \sim -75^\circ)$
	V Up/Downward $+0.52 \sim -2.18 \text{ rad } (+30^\circ \sim -125^\circ)$
	R2 Rotation2 $\pm 6.283 \text{ rad } (\pm 360^\circ)$
	B Bending $\pm 2.094 \text{ rad } (\pm 120^\circ)$
Max. Speed	S Swivel $1.571 \text{ rad / s } (90^\circ / \text{s})$
	H For/Backward $1.396 \text{ rad / s } (80^\circ / \text{s})$
	V Up/Downward $1.396 \text{ rad / s } (80^\circ / \text{s})$
	R2 Rotation2 $1.745 \text{ rad / s } (100^\circ / \text{s})$
	B Bending $1.745 \text{ rad / s } (100^\circ / \text{s})$
Allowable Moment	R2 Rotation2 $1960 \text{ N} \cdot \text{m } (200 \text{ Kg} \cdot \text{m})$
	B Bending $1960 \text{ N} \cdot \text{m } (200 \text{ Kg} \cdot \text{m})$
	R1 Rotation1 $823 \text{ N} \cdot \text{m } (84 \text{ Kg} \cdot \text{m})$
Repeatability	$\pm 0.5 \text{ mm}$
Ambient Temperature	$0 \sim 40^\circ \text{C } (273 \sim 313 \text{ K})$
Approximate Weight	2800 Kg
Motion Section Area	4.519 m^2

**To improve robot performance, any specification Could be changed without notice.