



ROBOT &  
SYSTEM

# HYUNDAI CONVEYOR SYSTEM



# Skillet Conveyor

The Skillet Conveyor is a most innovative conveyor for car body transportation.

No damage to the car body on skillet during loading and unloading. It does not need to use Electric Monorail System for transporting the bodies from one line to another line. No foundation work for pits and no steel structures but only fixing.

## Type

- » Floor Skillet Conveyor
- » Overhead Skillet Conveyor

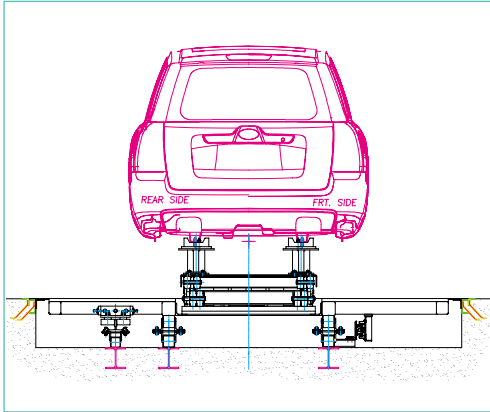
## Feature

- » Easy maintenance
- » Low installation cost
- » High labor efficiency
- » Adjustable working height
- » Low noise

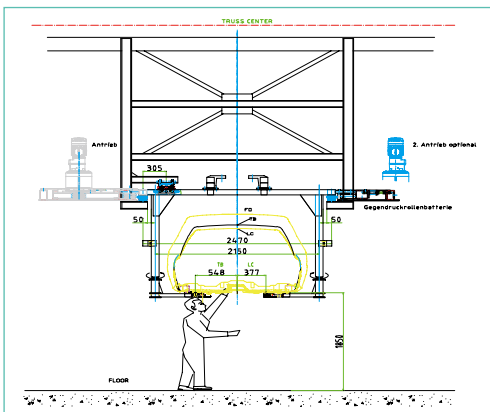


# Floor & Overhead Skillet Conveyor

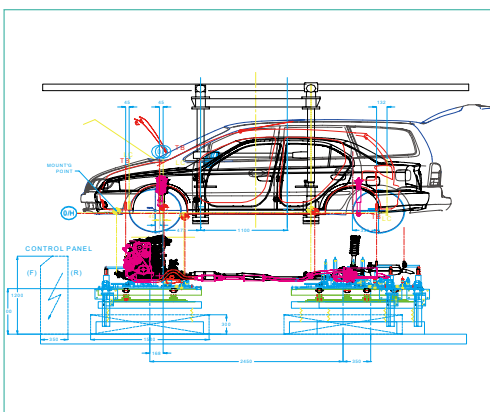
## Application



Trim & Final Line



Chassis Line



Chassis Marriage System



# Electric Monorail System (EMS)

The Electric Monorail System is a conveyor equipped with self-propelling motor which enables its high speed operation and aluminium track to reduce the amount of carrier conveyed.

It is also suitable to work on continuous condition and environmental protection through its low noise level and minimal dust.

## **Type**

- » Floor and Overhead EMS
- » Contact Type EMS
- » Non-Contact Type EMS

## **Feature**

- » Fast transportation
- » Suitability to environmental protection
- » Reduced stockpiles

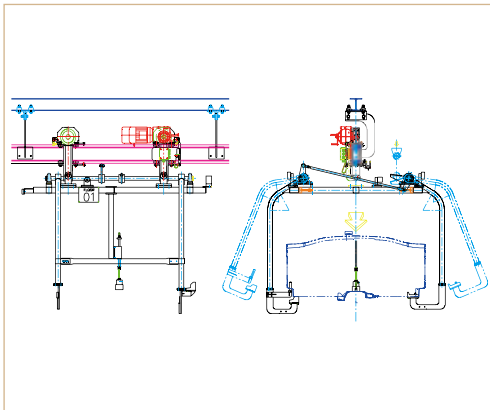


# Floor & Overhead EMS

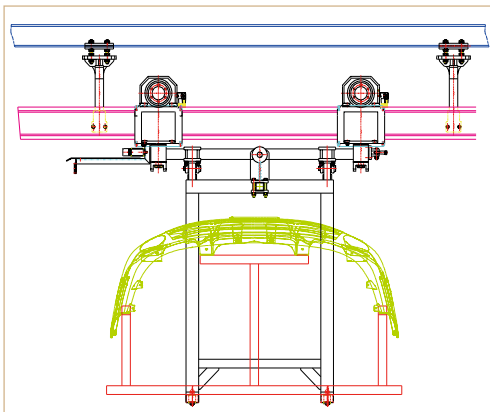
## Application



Painted Body Storage



Body Panel Transfer

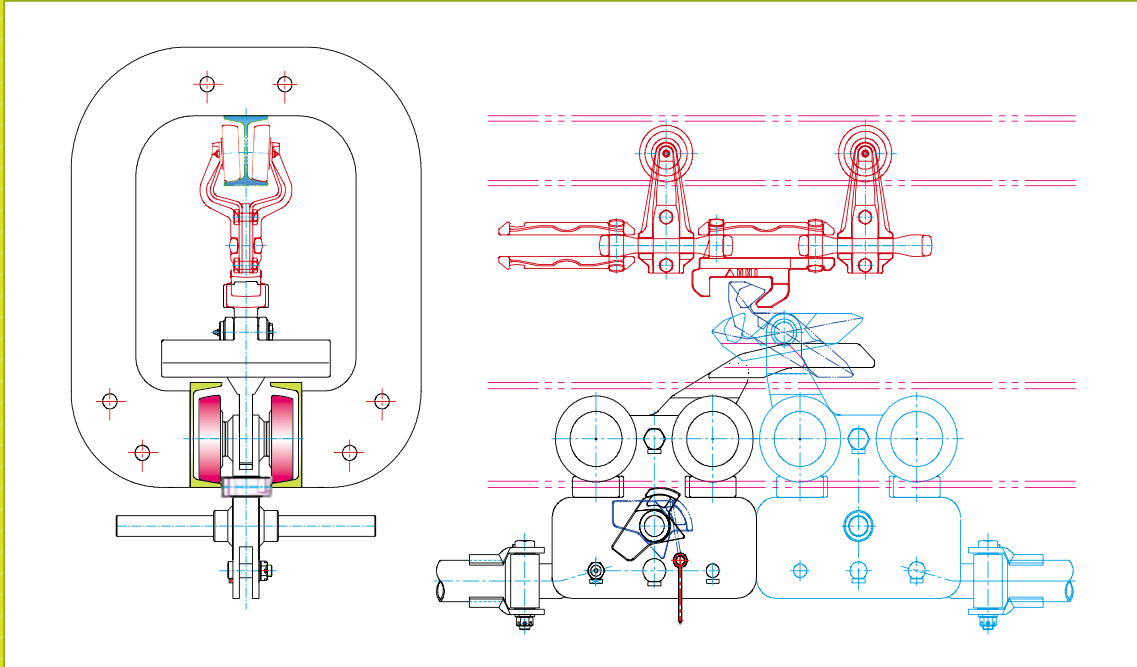


Contactless Power Pick-up EMS



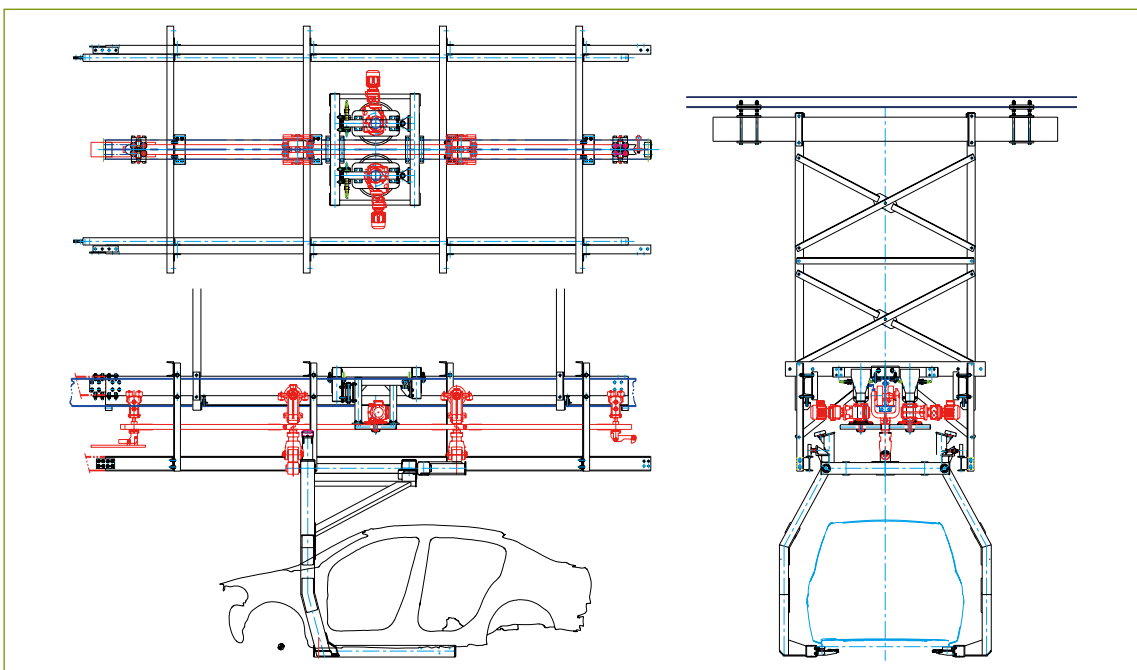
# Power & Free Chain Conveyor

Our unique model : low noise and damage on storage



# Overhead Friction Conveyor

Simple design and device



# Overhead and Inverted Power & Free Conveyor

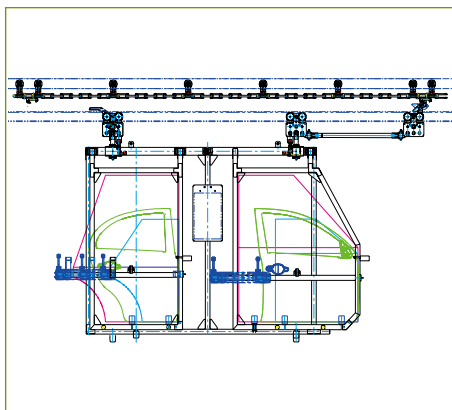
## Application



Chassis Line



Inverted Power & free : our unique model



Door Line



# Lifting & Lowering Station

## Application



2-Post Belt hoisting Table lifter



4-Post Belt hoisting Table lifter



Skillet Cross transfer on Mezzanine



# Others

## Application



Engine Mounting RGV-Contactless



Engine Mounting RGV-Busbars



Powertrain Marriage System



Floor Bar Friction Conveyor



Tire Mounting System



PBS Warehouse

# Quality Assurance

The Quality Assurance Program of the Engine & Machinery Division (EMD) has the primary goal of supplying products and services which rank among the best in the industry in total compliance with both contractual and regulatory requirements.

To fulfill this primary goal, and to continue to offer the quality on which our strong reputation has been built, combined efforts are required from our quality assurance, engineering and production personnel.

It is the policy of EMD to constantly maintain an effective and efficient documented Quality Assurance System, complying with the requirements of the International Standard : ISO9001 - 1995, QS 9000TE and customer contractual requirements.



# Overseas Network

---

## Republic of Korea

### Head Office

1000 Bangeojin sunhwan-doro, Dong-gu, Ulsan, Korea  
TEL : +82 52 202 7901/6233 / FAX : +82 52 202 7900  
E-mail: machinery@hhi.co.kr

### Seoul Office

140-2, Gye-dong, Jongno-gu, Seoul  
TEL : +82 2 746 4713 / FAX : +82 2 746 4724

### Ansan Office

1431-2, Sa-dong, Sangnok-gu, Ansan-si, Gyeonggi-do  
TEL : +82 31 409 4945 / FAX : +82 31 409 4946

### Cheonan Office

355-15, Daga-dong, Cheonan-si, Chungcheongnam-do  
TEL : +82 41 576 4294 / FAX : +82 41 576 4296

### Daegu Office

223-5, Beomeo 2-dong, Suseong-gu, Daegu  
TEL : +82 53 746 6232~3 / FAX : +82 53 746 6231

### Gwangju Office

415-2, Nongseong-dong, Seo-gu, Gwangju  
TEL : +82 62 363 5272 / FAX : +82 62 363 5273

## Overseas

### Chicago, U.S.A

955 Estes Avenue, Elk Grove Village IL  
60007, U.S.A  
TEL : +1 800 423 8721  
FAX : +1 847 437 3574

### Houston, U.S.A

1400 Broadfield, Suite 110, Park 10 Center  
Houston, Texas 77084, U.S.A  
TEL : +1 281 578 7097  
FAX : +1 281 578 8317

### London, U.K

2nd Floor, The Triangle 5-17, Hammersmith  
Grove London W6 0LG, U.K  
TEL : +44 20 8741 0501  
FAX : +44 20 8741 5620/8834 7281

### Rotterdam, Netherland

Folkert Elsingastraart 7  
3067 NW, Rotterdam, The Netherland  
TEL : +31 10 212 1567  
FAX : +31 10 212 5134

### Shanghai, China

Room 802, South Area Office Bulding  
#1500, Henkun Road, Minhang District,  
Shanghai, China  
TEL : +86 21 3357 5799  
FAX : +86 21 3357 5809

### Beijing, China

Beijing Hyundai Jingcheng  
No. 2. Nanli, Luguoqiao  
Fengtai District, Beijing, China  
TEL : +86 10 8321 2588  
FAX : +86 10 8321 2188

### Mumbai, India

5th Floor, East Quadrant, The IL & FS  
Financial Centre Plot no. C-22, G-Block,  
Bandra-Kurla Complex Bandra (E), Mumbai  
400-051, India  
TEL : +91 22 2653 3420~26  
FAX : +91 22 2653 3429~30



[www.hhi.co.kr](http://www.hhi.co.kr)  
[www.hyundai-engine.com](http://www.hyundai-engine.com)

We build a better future  
 **HYUNDAI**  
HEAVY INDUSTRIES CO.,LTD.  
**ENGINE & MACHINERY**

1000 Bangeojinsunhwan-doro, Dong-gu, Ulsan, Korea

TEL : (82-52) 202-6230, 7905

FAX : (82-52) 202-7900

E-mail : [machinery@hhi.co.kr](mailto:machinery@hhi.co.kr)